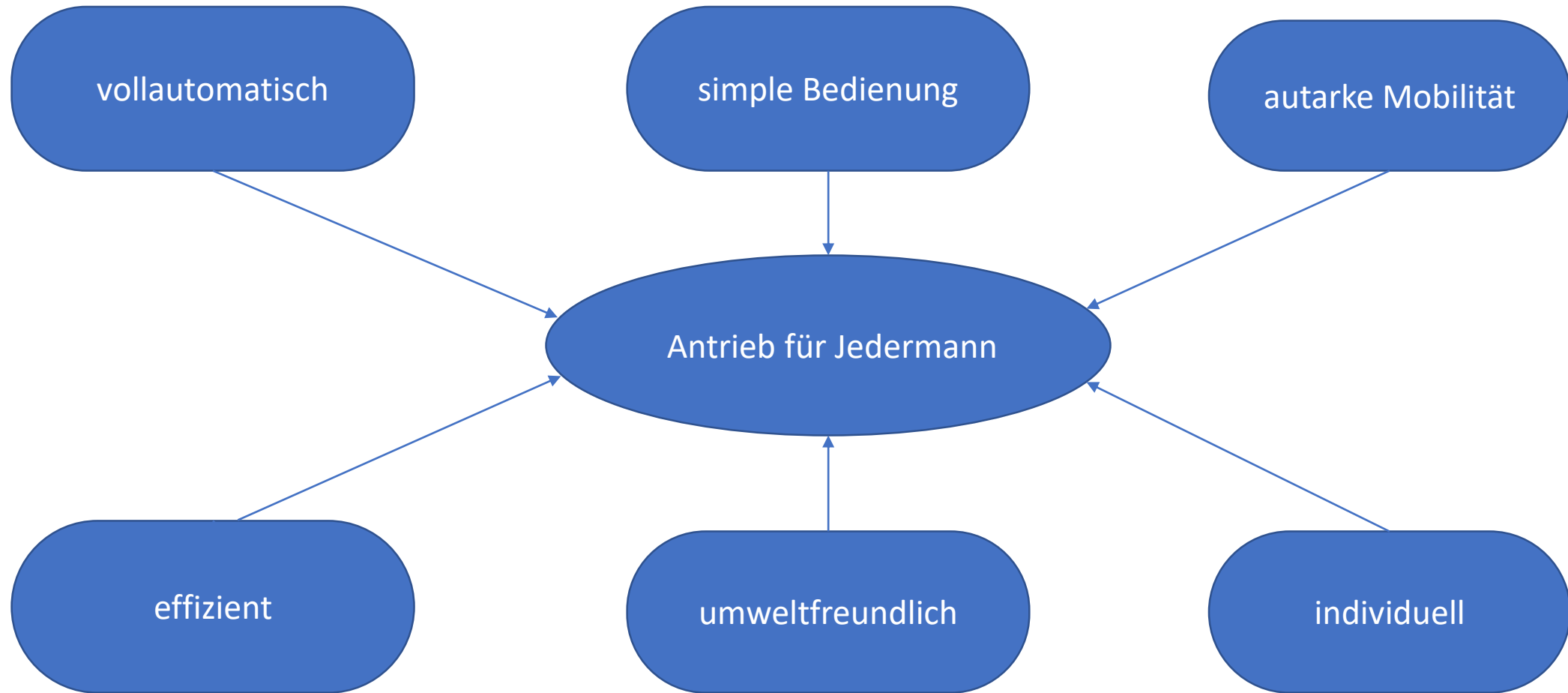



Entwicklung eines auf einer Drehmomentanalyse basierenden Antriebes für ein E-Bike



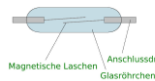


Sensorik

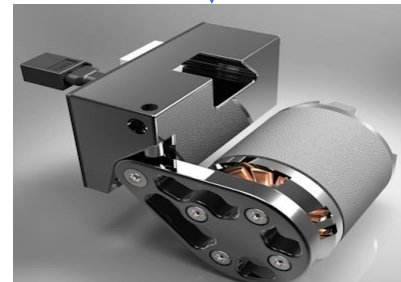
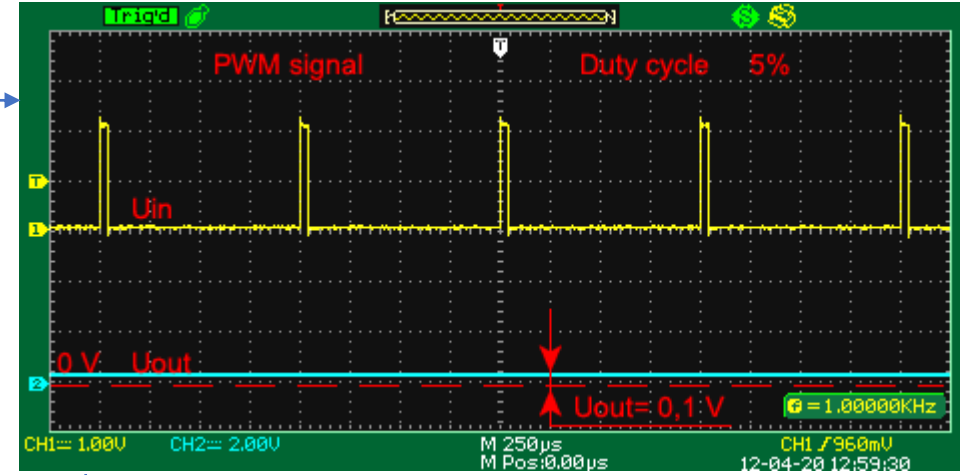
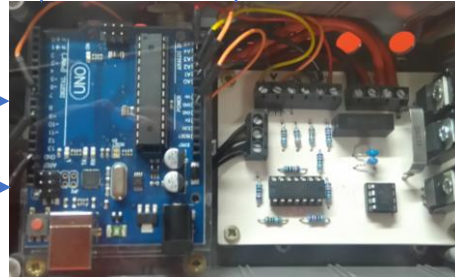
Stromaufnahme
Messwiderstand



Drehzahl
Reed-Kontakt



Magnetische Laschen
Anschlussdrähte
Glasröhrchen



Duty cycle	0.....50.....100%	Entspricht
Spannung	0.....12.....24V	Entspricht
Drehzahl	0.....315.....630 U/Min	

